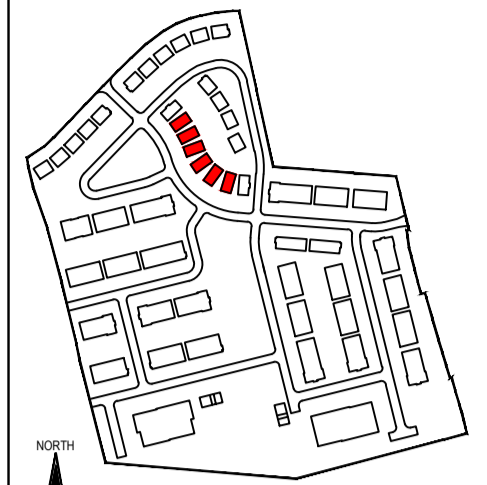


**HOUSE TYPE B - SITE NO.'s 17, 18, 19, 20, 21 & 22**

**COPYRIGHT**  
THIS DOCUMENT AND ALL DATA CONTAINED HEREIN REMAIN THE PROPERTY OF O'DALY ARCHITECTS. IT IS SUPPLIED IN CONFIDENCE FOR EVALUATION PURPOSES ONLY UNDER THE CONDITION THAT SAME IS NOT USED, REPRODUCED OR TRANSMITTED IN ANY WAY TO OTHERS WITHOUT WRITTEN CONSENT.

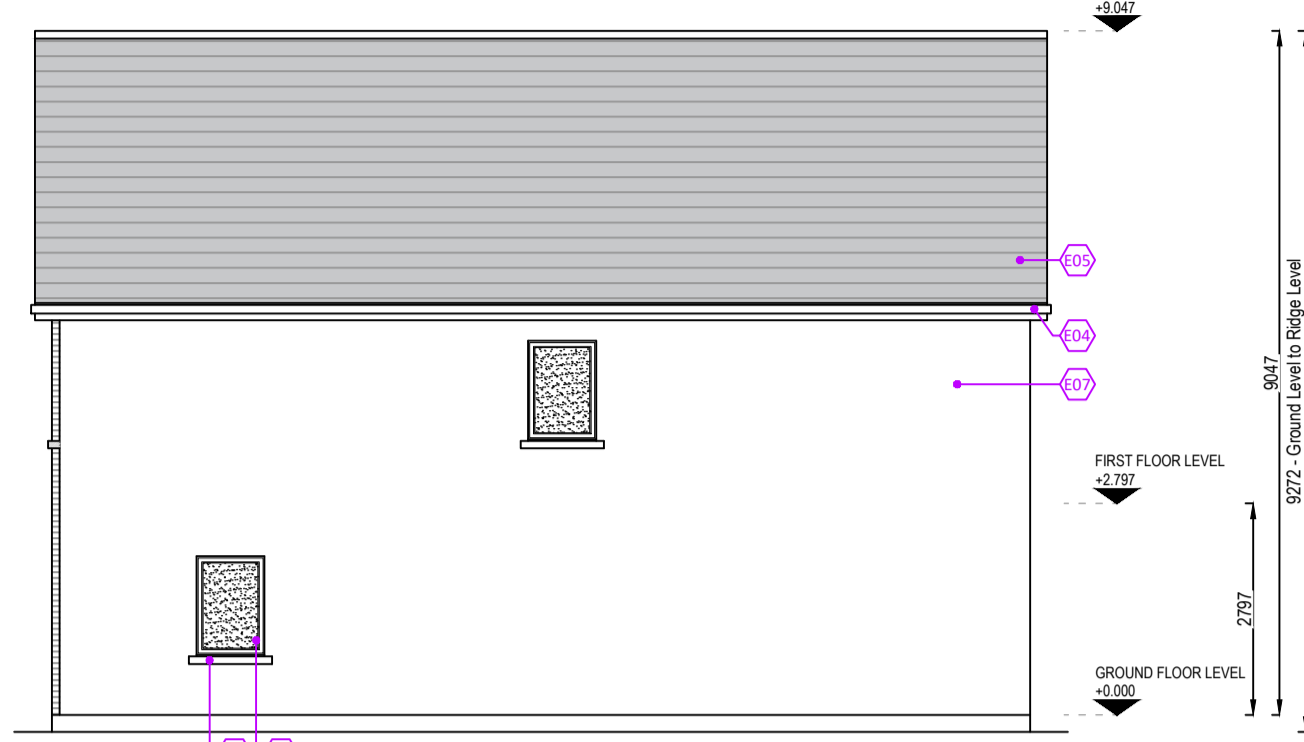
**DIMENSIONS**  
UNLESS OTHERWISE STATED, DIMENSIONS SHOWN ARE IN MILLIMETRES. NO DIMENSIONS TO BE SCALED FROM THIS DRAWING. ALL DIMENSIONS TO BE CHECKED BY THE CONTRACTOR ON SITE AND ANY DISCREPANCIES TO BE REPORTED TO THE ARCHITECT.



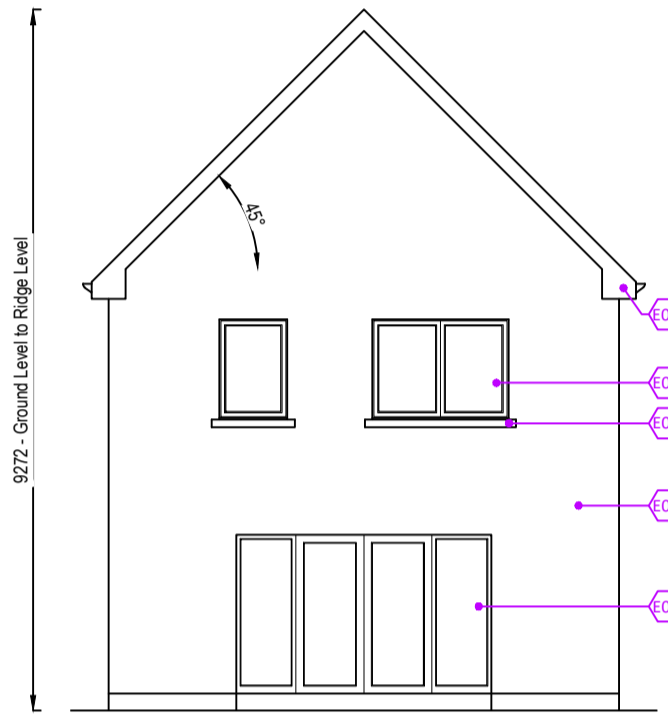
**Key Plan**  
Scale 1:5000



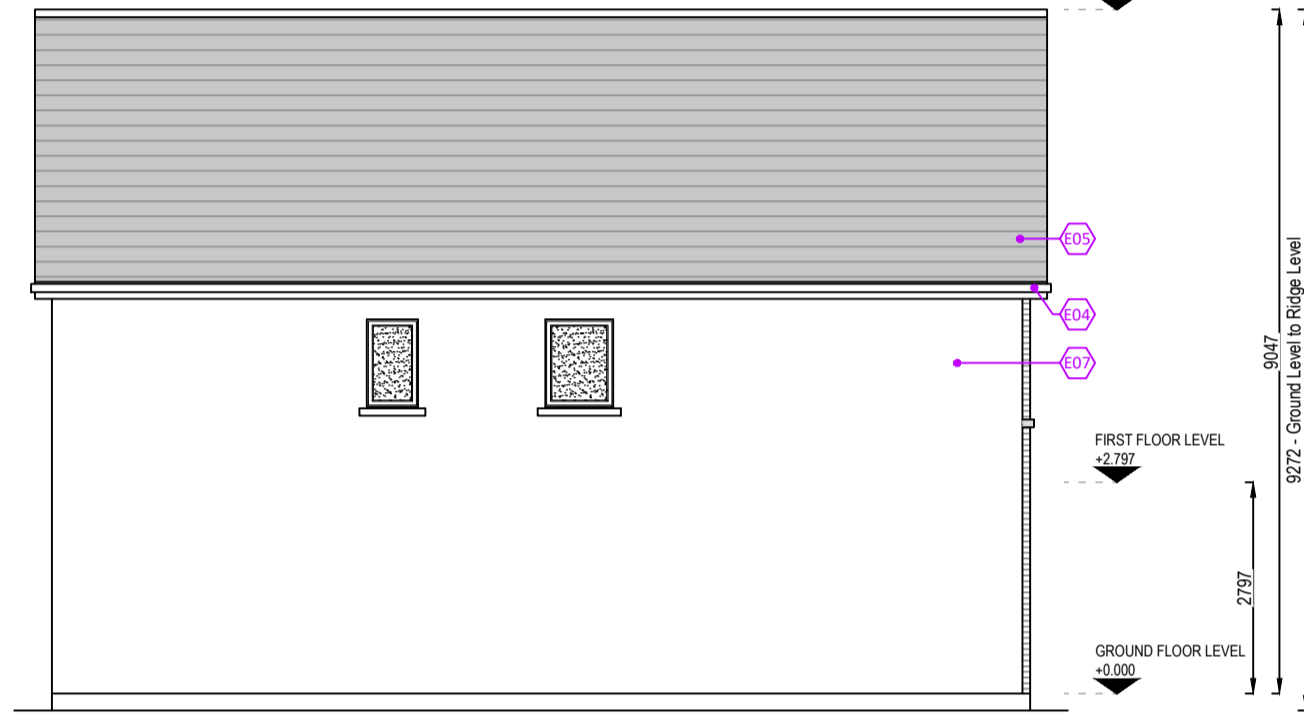
**FRONT ELEVATION**  
Scale 1:100



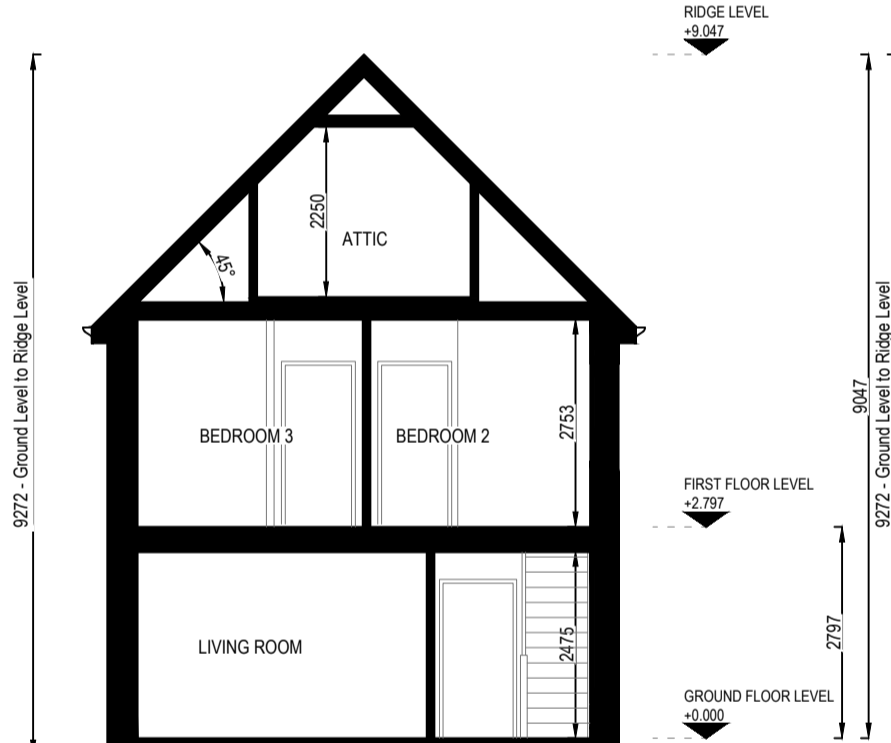
**SIDE ELEVATION**  
Scale 1:100



**REAR ELEVATION**  
Scale 1:100



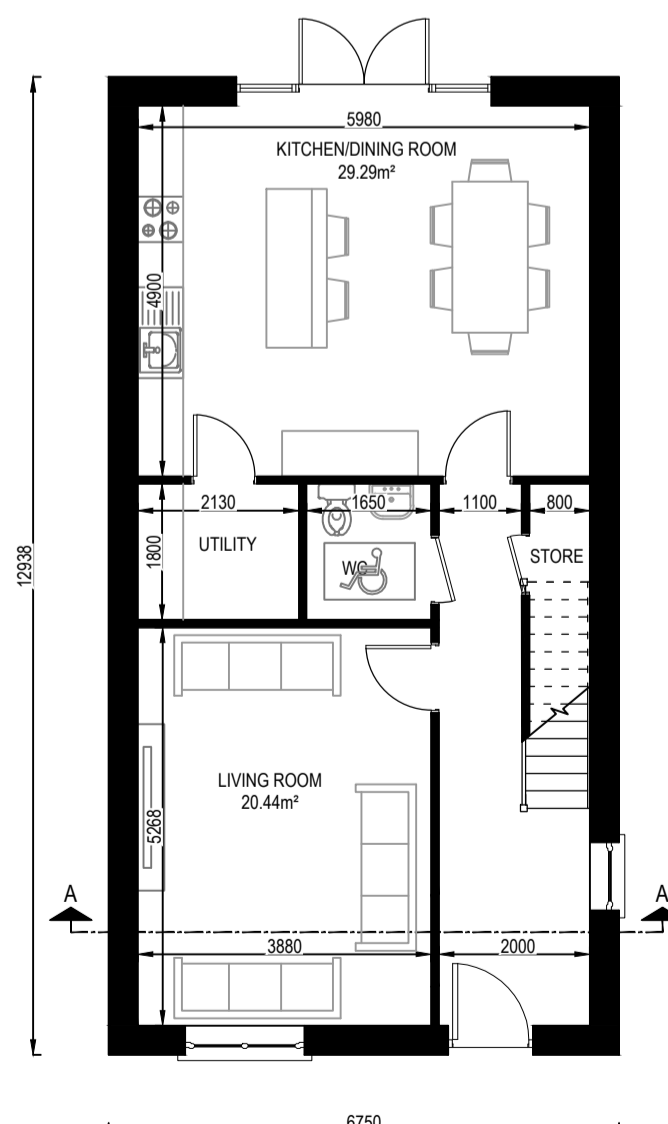
**SIDE ELEVATION**  
Scale 1:100



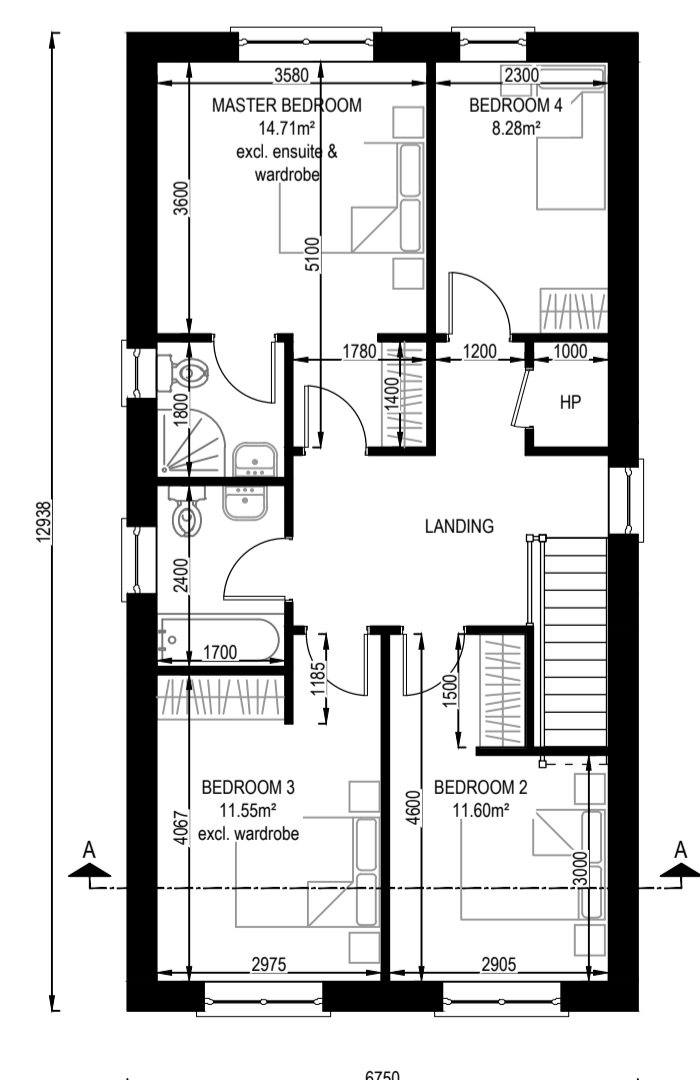
**SECTION A-A**  
Scale 1:100



**ARTIST'S IMPRESSION**



**GROUND FLOOR PLAN**  
Scale 1:100



**FIRST FLOOR PLAN**  
Scale 1:100

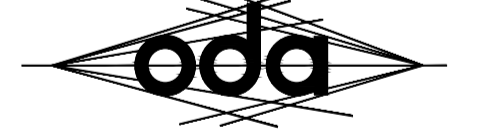
**SEE KEY PLAN FOR ORIENTATION**

**FOR FINISHED FLOOR LEVELS**  
**SEE DWG NO.'s 24004-A-112 & 113**

| House Type B-DF<br>4 bedroom 7 Person Dual Frontage Detached House<br>Taken from<br>Quality Housing for Sustainable Communities<br>Table 5.1 Space provisions and room sizes<br>for typical dwellings<br>4 Bedroom 7 Person House (2 Storey)<br>(Agg. Bedroom <sup>s</sup> 13m <sup>2</sup> +11.4m <sup>2</sup> +11.4m <sup>2</sup> +7.1m <sup>2</sup> ) |                    |                      |
|--|--------------------|----------------------|
|  | Required           | House Type B-DF      |
| Ground Floor Area  | -                  | 72.76m <sup>2</sup>  |
| First Floor Area   | -                  | 72.76m <sup>2</sup>  |
| Gross Floor Area   | 110m <sup>2</sup>  | 145.52m <sup>2</sup> |
| Min. Main Living Room  | 15m <sup>2</sup>   | 20.44m <sup>2</sup>  |
| Aggregate Living Area  | 40m <sup>2</sup>   | 49.73m <sup>2</sup>  |
| Bedroom 1  | 13m <sup>2</sup>   | 14.71m <sup>2</sup>  |
| Bedroom 2  | 11.4m <sup>2</sup> | 11.60m <sup>2</sup>  |
| Bedroom 3  | 11.4m <sup>2</sup> | 11.55m <sup>2</sup>  |
| Bedroom 4  | 7.1m <sup>2</sup>  | 8.28m <sup>2</sup>   |
| Aggregate Bedroom Area   | 43m <sup>2</sup>   | 46.16m <sup>2</sup>  |
| Storage incl. master wardrobe  | 6m <sup>2</sup>    | 6.69m <sup>2</sup>   |

|                               | Required           | House Type B-DF      |
|-------------------------------|--------------------|----------------------|
| Ground Floor Area             | -                  | 72.76m <sup>2</sup>  |
| First Floor Area              | -                  | 72.76m <sup>2</sup>  |
| Gross Floor Area              | 110m <sup>2</sup>  | 145.52m <sup>2</sup> |
| Min. Main Living Room         | 15m <sup>2</sup>   | 20.44m <sup>2</sup>  |
| Aggregate Living Area         | 40m <sup>2</sup>   | 49.73m <sup>2</sup>  |
| Bedroom 1                     | 13m <sup>2</sup>   | 14.71m <sup>2</sup>  |
| Bedroom 2                     | 11.4m <sup>2</sup> | 11.60m <sup>2</sup>  |
| Bedroom 3                     | 11.4m <sup>2</sup> | 11.55m <sup>2</sup>  |
| Bedroom 4                     | 7.1m <sup>2</sup>  | 8.28m <sup>2</sup>   |
| Aggregate Bedroom Area        | 43m <sup>2</sup>   | 46.16m <sup>2</sup>  |
| Storage incl. master wardrobe | 6m <sup>2</sup>    | 6.69m <sup>2</sup>   |

**THIS DRAWING SHOULD BE READ IN CONJUNCTION WITH THE HOUSING QUALITY ASSESSMENT SCHEDULE DOCUMENT REF. 24004-AR-HQA**



**o'daly architects**

1st Floor - Unit 13(B) - Mullaghboy Industrial Estate  
Navan - County Meath - Tel: (046) 9021283  
Mobile: (087) 0925233 - Email: ivan@odaly.ie



**Client:**  
Loughglynn Developments Ltd.

**Project Name and Address:**  
Proposed Large Residential Development (LRD) at "Crowpark 1st Division", Kildalkey Road, Trim, County Meath.

**Project Stage:**  
Planning

**Drawing Name:**  
House Type B  
4 Bedroom, 2 Storey, Detached  
Site No.'s 17, 18, 19, 20, 21 & 22

**Drawn By:** iod  
**Scale:** as shown @ A2

**Checked By:** iod  
**Date:** 04.06.2026

**Drawing Number:** 24004-AR-202  
**Revision:** P01